

RCK 95
Hřídelové spojky/Shaft Couplings

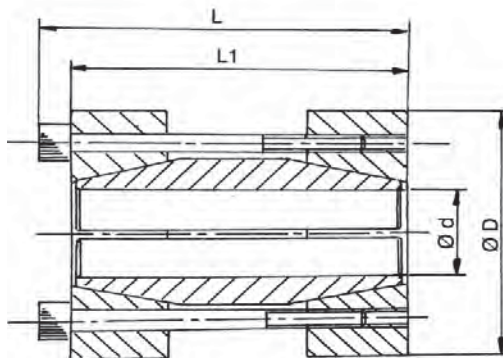
Doporučená tolerance: Hřídel-h8

Recommended tolerances: Shaft-h8

Drsnost povrchu: Rt max. 16µm

Clamping surfaces: Rtmax. 16µm

Materiál: ST = ocel C43 / ST = steel C43



Upínací pouzdra RCK95 - hřídelové spojky / Clamping Elements RCK95 - Shaft Couplings

Označení / Obj.č. Part.No.	Rozměry / Dimensions				Moment/ Torque Mt [Nm]	Tlak/Pressure Hř./Shaft [N/mm ²]	Up.šrouby/Clamp.Screws			Hmot/ Weight [kg]
	d [mm]	D [mm]	L1 [mm]	L [mm]			Počet/ No.	Typ/ Type	Moment/ Torq.Nm	
RCK95-17x50	17	50	50	56	200	110	4	M6x40	17	0,46
RCK95-18x50	18	50	50	56	220	110	4	M6x40	17	0,45
RCK95-19x50	19	50	50	56	230	110	4	M6x40	17	0,44
RCK95-20x50	20	50	50	56	240	105	4	M6x40	17	0,44
RCK95-24x55	24	55	60	66	290	120	4	M6x50	17	0,65
RCK95-25x55	25	55	60	66	450	110	6	M6x50	17	0,63
RCK95-28x60	28	60	60	66	510	110	6	M6x50	17	0,75
RCK95-30x60	30	60	60	66	550	105	6	M6x50	17	0,71
RCK95-32x63	32	63	60	66	580	90	6	M6x50	17	0,73
RCK95-35x75	35	75	75	83	790	105	4	M8x60	41	1,33
RCK95-38x75	38	75	75	83	850	100	4	M8x60	41	1,20
RCK95-40x75	40	75	75	83	900	95	4	M8x60	41	1,19
RCK95-42x78	42	78	75	83	950	90	4	M8x60	41	1,28
RCK95-45x85	45	85	85	93	1520	110	6	M8x70	41	1,72
RCK95-48x90	48	90	85	93	1620	100	6	M8x70	41	1,88
RCK95-50x90	50	90	85	93	1690	95	6	M8x70	41	1,90
RCK95-55x94	55	94	85	93	2470	110	8	M8x70	41	2,00
RCK95-60x100	60	100	85	93	2710	95	8	M8x70	41	2,17
RCK95-65x105	65	105	85	93	2930	90	8	M8x70	41	3,95
RCK95-70x115	70	115	100	110	3770	90	6	M10x80	83	5,25
RCK95-*75x125	*75	125	100	110	4030	80	6	M10x80	83	5,46
RCK95-*80x125	*80	125	100	110	4300	70	6	M10x80	83	5,30