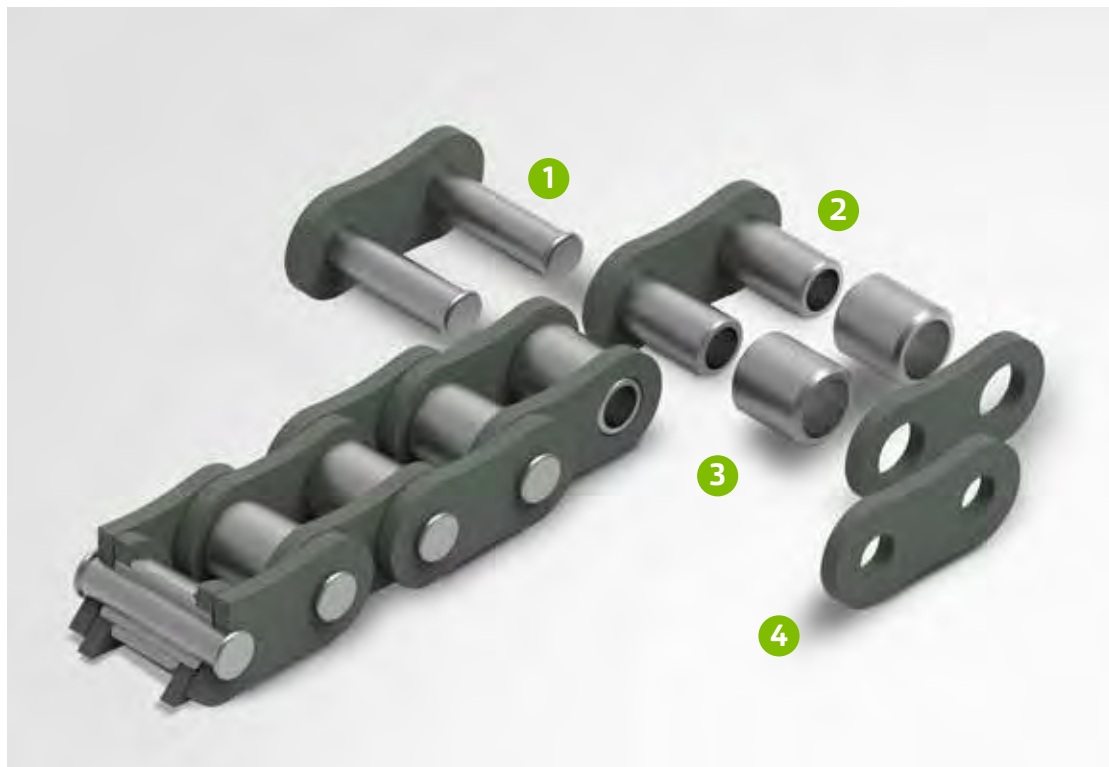


**NP roller chains**

- ① Pins made of alloyed steel, case-hardened and grinded, with supplementary nickel plating
- ② Bush – seamless, cold-extruded bush, case-hardened and with supplementary nickel plating
- ③ Roller – seamless, cold-extruded roller, through hardend and with supplementary nickel plating
- ④ Link plates – stamped, quenched and tempered and subsequently ball blasted and with supplementary nickel-plating



## Nickel Plated (NP) roller chains

NP “Nickel Plated” roller chains are produced with the same specifications as the KW standard roller chains. In addition to that, all components receive a nickel plating.

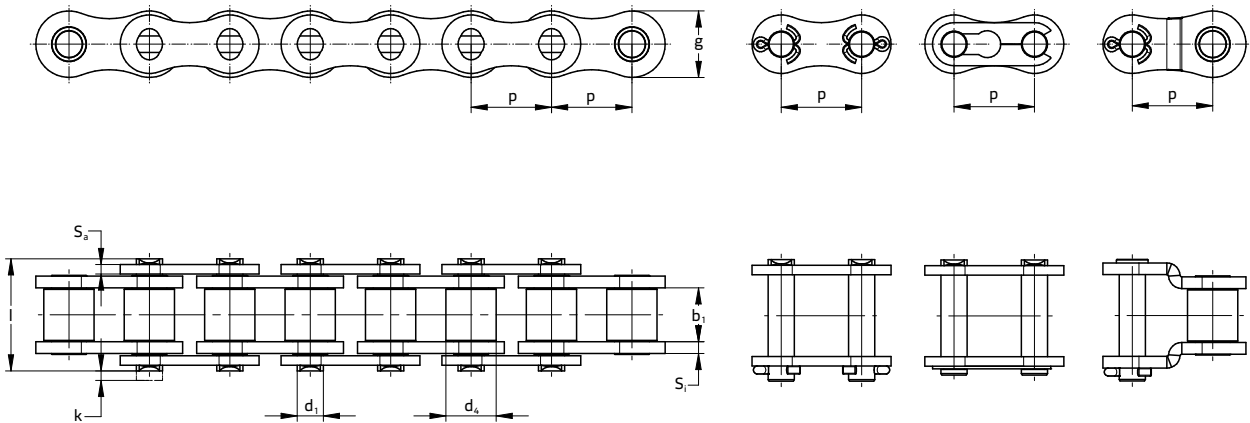
The coating has a complementary copper plating base layer for significantly higher corrosion protection properties than standard nickel coatings. Furthermore, the nickel-plated roller chains are free of chromium-6 components and hydrogen embrittlement.

Nickel-plated chains can also be supplied with FDA class H1 or FDA class H2 compliant lubrication upon request.

# NP roller chains

## KW NP simplex

Drawings / product data (European standard)



### KettenWulf corrosion-protected roller chains

KW NP simplex, sizes according to European standard

ISO 606 / DIN 8187

Designation	Pitch [mm]	Min. inner width [mm]	Max. protection roller $\varnothing$ [mm]	Max. pin $\varnothing$ [mm]	Max. pin length [mm]	Max. overhang connecting pin [mm]	Inner plate thickness [mm]	Outer plate thickness [mm]	Plate height [mm]	Bearing area [cm <sup>2</sup> ]	Min. breaking load [N]	Weight [kg/m]
Chain type	$p$	$b_1$	$d_2$	$d_1$	$l$	$k$	$S_1$	$S_2$	$g$	$f$	$F_b$	$\approx q$
KW 08BNP	12.700	7.75	8.51	4.45	16.50	2.40	1.50	1.50	11.70	0.50	18000	0.70
KW 10BNP	15.875	9.65	10.16	5.08	18.80	2.60	1.50	1.50	14.60	0.67	22200	0.90
KW 12BNP	19.050	11.68	12.07	5.72	22.30	2.70	1.80	1.80	16.00	0.89	28900	1.20
KW 16BNP	25.400	17.02	15.88	8.28	35.40	3.40	3.70	3.00	21.00	2.10	60000	2.67
KW 20BNP	31.750	19.56	19.05	10.19	40.80	3.40	4.50	3.50	25.78	2.96	95000	3.81
KW 24BNP	38.100	25.40	25.40	14.63	53.30	4.70	6.00	5.50	33.25	5.54	160000	7.00
KW 32BNP	50.800	30.99	29.21	17.81	67.40	3.90	6.90	6.00	42.20	8.10	250000	9.97

» Also available as duplex and triplex upon request.

## Specific chain versions for different environmental conditions

**Figure 1:**  
LF roller chain



**Figure 2:**  
NP roller chain



**Figure 3:**  
SS roller chain



**Figure 4:**  
TGI roller chain



Formation of rust under different environmental conditions									
	Water			5% saline solution			1% ammonia		
	3 days	9 days	15 days	3 days	9 days	15 days	3 days	9 days	15 days
<b>Standard</b>									
<b>NP (Nickel plated)</b>									
<b>TGI</b>									
<b>SS 304</b>									

no rust   
 5-10%   
 20-30%   
 70-90%   
 100%