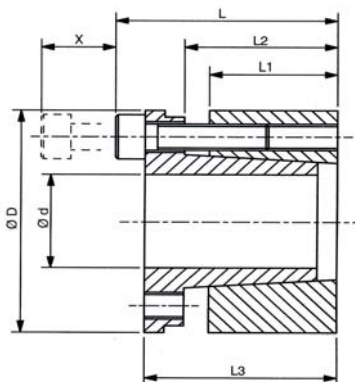


RCK 70 - Samostředící/Self-centring
Pro vyšší zatížení/High Torque Units
Možný axiál.posuv náboje

Doporučená tolerance: Hřídel-h8, Náboj-H8
Recommended tolerances: Shaft-h8, Hub-H8
Drsnost povrchu: Rt max. 16µm
Clamping surfaces: Rtmax. 16µm
Materiál: ST = ocel C43 / ST = steel C43



Upínací pouzdra RCK70 - samostředící / Clamping Elements RCK70 - Self-centring

| Označení / Obj.č. Part.No. | Rozměry / Dimensions | | | | | | Moment/ Torque Mt [Nm] | Tlak/Pressure | | Up.šrouby/Clamp.Screws | | | Uvolň./Extr. | | Hmot/ Weight [kg] |
|-------------------------------|----------------------|-----------|------------|------------|------------|-----------|------------------------------|----------------------|---------------------|------------------------|--------------|--------------------|--------------|---------------|-------------------------|
| | d [mm] | D [mm] | L1 [mm] | L2 [mm] | L3 [mm] | L [mm] | | Hř./Shaft [N/mm2] | Náb./Hub [N/mm2] | Počet/ No. | Typ/ Type | Moment/ Torq.Nm | Typ/ Type | Počet/ No. | |
| RCK70-19x47 | 19 | 47 | 26 | 31 | 39 | 45 | 350 | 228 | 98 | 4 | M6x25 | 17 | M6 | 2 | 0.38 |
| RCK70-20x47 | 20 | 47 | 26 | 31 | 39 | 45 | 390 | 231 | 100 | 4 | M6x25 | 17 | M6 | 2 | 0.37 |
| RCK70-22x47 | 22 | 47 | 26 | 31 | 39 | 45 | 440 | 220 | 95 | 4 | M6x25 | 17 | M6 | 2 | 0.36 |
| RCK70-24x50 | 24 | 50 | 26 | 31 | 39 | 45 | 519 | 215 | 102 | 6 | M6x25 | 17 | M6 | 3 | 0.39 |
| RCK70-25x50 | 25 | 50 | 26 | 31 | 39 | 45 | 590 | 230 | 105 | 6 | M6x25 | 17 | M6 | 3 | 0.38 |
| RCK70-28x55 | 28 | 55 | 26 | 31 | 39 | 45 | 700 | 220 | 110 | 6 | M6x25 | 17 | M6 | 3 | 0.45 |
| RCK70-30x55 | 30 | 55 | 26 | 31 | 39 | 45 | 760 | 200 | 120 | 6 | M6x25 | 17 | M6 | 3 | 0.42 |
| RCK70-32x60 | 32 | 60 | 26 | 31 | 39 | 45 | 930 | 230 | 114 | 8 | M6x25 | 17 | M6 | 4 | 0.52 |
| RCK70-35x60 | 35 | 60 | 26 | 31 | 39 | 45 | 1030 | 200 | 119 | 8 | M6x25 | 17 | M6 | 4 | 0.48 |
| RCK70-38x65 | 38 | 65 | 26 | 31 | 39 | 45 | 1240 | 210 | 124 | 8 | M6x25 | 17 | M6 | 4 | 0.57 |
| RCK70-40x65 | 40 | 65 | 26 | 31 | 39 | 45 | 1350 | 200 | 125 | 8 | M6x25 | 17 | M6 | 4 | 0.54 |
| RCK70-42x75 | 42 | 75 | 30 | 36 | 47 | 55 | 2170 | 236 | 140 | 6 | M8x30 | 41 | M8 | 3 | 0.91 |
| RCK70-45x75 | 45 | 75 | 30 | 36 | 47 | 55 | 2350 | 236 | 140 | 6 | M8x30 | 41 | M8 | 3 | 0.89 |
| RCK70-48x80 | 48 | 80 | 30 | 36 | 47 | 55 | 2510 | 218 | 135 | 6 | M8x30 | 41 | M8 | 3 | 1.00 |
| RCK70-50x80 | 50 | 80 | 30 | 36 | 47 | 55 | 2580 | 218 | 135 | 6 | M8x30 | 41 | M8 | 3 | 0.95 |
| RCK70-55x85 | 55 | 85 | 30 | 36 | 47 | 55 | 3200 | 223 | 145 | 8 | M8x30 | 41 | M8 | 4 | 1,02 |
| RCK70-60x90 | 60 | 90 | 30 | 36 | 47 | 55 | 3380 | 198 | 157 | 8 | M8x30 | 41 | M8 | 4 | 1,11 |
| RCK70-65x95 | 65 | 95 | 30 | 36 | 47 | 55 | 4160 | 213 | 140 | 8 | M8x30 | 41 | M8 | 4 | 1,19 |
| RCK70-70x110 | 70 | 110 | 40 | 46 | 57 | 67 | 6840 | 225 | 143 | 8 | M10x35 | 83 | M10 | 4 | 2,20 |
| RCK70-75x115 | 75 | 115 | 40 | 46 | 62 | 72 | 7500 | 210 | 138 | 8 | M10x35 | 83 | M10 | 4 | 2,53 |
| RCK70-80x120 | 80 | 120 | 40 | 46 | 62 | 72 | 8100 | 200 | 130 | 8 | M10x35 | 83 | M10 | 4 | 2,66 |
| RCK70-85x125 | 85 | 125 | 40 | 46 | 62 | 72 | 9700 | 210 | 145 | 10 | M10x35 | 83 | M10 | 4 | 2,79 |
| RCK70-90x130 | 90 | 130 | 40 | 46 | 62 | 72 | 10300 | 200 | 138 | 10 | M10x35 | 83 | M10 | 4 | 2,93 |
| RCK70-95x135 | 95 | 135 | 40 | 46 | 62 | 72 | 12100 | 210 | 148 | 10 | M10x35 | 83 | M10 | 4 | 3,06 |
| RCK70-100x145 | 100 | 145 | 46 | 52 | 77 | 89 | 15700 | 216 | 148 | 8 | M12x45 | 145 | M12 | 4 | 4,54 |
| RCK70-110x155 | 110 | 155 | 46 | 52 | 77 | 89 | 17200 | 196 | 139 | 8 | M12x45 | 145 | M12 | 4 | 4,92 |
| RCK70-120x165 | 120 | 165 | 46 | 52 | 77 | 89 | 22500 | 216 | 156 | 10 | M12x45 | 145 | M12 | 4 | 5,28 |
| RCK70-130x180 | 130 | 180 | 46 | 52 | 77 | 89 | 24000 | 196 | 140 | 12 | M12x45 | 145 | M12 | 4 | 5,52 |
| RCK70-140x190 | 140 | 190 | 51 | 59 | 84 | 90 | 30800 | 196 | 145 | 8 | M14x45 | 230 | M14 | 4 | 7,25 |
| RCK70-150x200 | 150 | 200 | 51 | 59 | 84 | 90 | 37150 | 205 | 153 | 10 | M14x45 | 230 | M14 | 5 | 7,65 |
| RCK70-160x210 | 160 | 210 | 51 | 59 | 84 | 90 | 40500 | 205 | 155 | 10 | M14x45 | 230 | M14 | 5 | 8,16 |
| RCK70-170x225 | 170 | 225 | 51 | 59 | 84 | 90 | 40900 | 163 | 123 | 12 | M14x45 | 230 | M14 | 6 | 8,75 |
| RCK70-180x235 | 180 | 235 | 51 | 59 | 84 | 90 | 41300 | 160 | 120 | 12 | M14x45 | 230 | M14 | 6 | 9,35 |