

ISO 5296

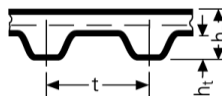
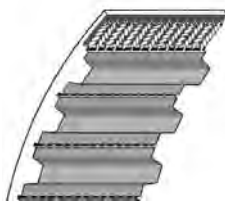
Objednáací číslo / Part.No.

360 MXL 025

360 ... Délka řemenu v 1/100 palce / Belt length 1/10 inch

MXL ... Profil, rozteč zubů / tooth pitch

025 ... Šířka řemenu v 1/100 palce/ belt width 1/100 inch



MXL

$p = 2,032 \text{ mm}$

$H = 1,2 \text{ mm}$

$H1 = 0,51 \text{ mm}$



Continental
CONTITECH

Typ MXL - Rozteč 2,032 mm - Pitch 2,032 mm

Typ Obj.č. Part.No.	Délka řemenu Pitch length		Zubů Teeth	Typ 012 3,18mm	Typ 019 4,76mm	Typ 025 6,35mm	Typ 031 7,94mm	Typ Obj.č. Part.No.	Délka řemenu Pitch length		Zubů Teeth	Typ 012 3,18mm	Typ 019 4,76mm	Typ 025 6,35mm	Typ 031 7,94mm
	[inch]	[mm]							[inch]	[mm]					
360 MXL	3,60	91,440	45	*	*	*	*	1496 MXL	14,96	379,984	187	*	*	*	*
432 MXL	4,32	109,728	54	*	*	*	*	1520 MXL	15,20	386,080	190	*	*	*	*
440 MXL	4,40	111,760	55	*	*	*	*	1600 MXL	16,00	406,400	200	*	*	*	*
456 MXL	4,56	115,824	57	*	*	*	*	1680 MXL	16,80	426,720	210	*	*	*	*
480 MXL	4,80	121,920	60	*	*	*	*	1696 MXL	16,96	430,784	212	*	*	*	*
488 MXL	4,88	123,952	61	*	*	*	*	1768 MXL	17,68	449,072	221	*	*	*	*
496 MXL	4,96	125,984	62	*	*	*	*	1800 MXL	18,00	457,200	225	*	*	*	*
536 MXL	5,36	136,144	67	*	*	*	*	1832 MXL	18,32	465,328	229	*	*	*	*
544 MXL	5,44	138,176	68	*	*	*	*	1856 MXL	18,56	471,424	232	*	*	*	*
576 MXL	5,76	146,304	72	*	*	*	*	1888 MXL	18,88	479,552	236	*	*	*	*
584 MXL	5,84	148,336	73	*	*	*	*	1984 MXL	19,84	503,936	248	*	*	*	*
632 MXL	6,32	160,528	79	*	*	*	*	1992 MXL	19,92	505,968	249	*	*	*	*
640 MXL	6,40	162,560	80	*	*	*	*	2048 MXL	20,48	520,192	256	*	*	*	*
656 MXL	6,56	166,624	82	*	*	*	*	2240 MXL	22,40	568,960	280	*	*	*	*
664 MXL	6,64	168,656	83	*	*	*	*	2360 MXL	23,60	599,440	295	*	*	*	*
704 MXL	7,04	178,816	88	*	*	*	*	2384 MXL	23,84	605,536	298	*	*	*	*
720 MXL	7,20	182,880	90	*	*	*	*	2464 MXL	24,64	625,856	308	*	*	*	*
760 MXL	7,60	193,040	95	*	*	*	*	2480 MXL	24,80	629,920	310	*	*	*	*
776 MXL	7,76	197,104	97	*	*	*	*	2496 MXL	24,96	633,984	312	*	*	*	*
800 MXL	8,00	203,200	100	*	*	*	*	2520 MXL	25,20	640,080	315	*	*	*	*
808 MXL	8,08	205,232	101	*	*	*	*	2584 MXL	25,84	656,336	323	*	*	*	*
824 MXL	8,24	209,296	103	*	*	*	*	2776 MXL	27,76	705,104	347	*	*	*	*
880 MXL	8,80	223,520	110	*	*	*	*	2864 MXL	28,64	727,456	358	*	*	*	*
888 MXL	8,88	225,552	111	*	*	*	*	2976 MXL	29,76	755,904	372	*	*	*	*
912 MXL	9,12	231,648	114	*	*	*	*	3064 MXL	30,64	778,256	383	*	*	*	*
920 MXL	9,20	233,680	115	*	*	*	*	3104 MXL	31,04	788,416	388	*	*	*	*
944 MXL	9,44	239,776	118	*	*	*	*	3200 MXL	32,00	812,800	400	*	*	*	*
952 MXL	9,52	241,808	119	*	*	*	*	3296 MXL	32,96	837,184	412	*	*	*	*
960 MXL	9,60	243,840	120	*	*	*	*	3424 MXL	34,24	869,696	428	*	*	*	*
976 MXL	9,76	247,904	122	*	*	*	*	3472 MXL	34,72	881,888	434	*	*	*	*
984 MXL	9,84	249,936	123	*	*	*	*	3480 MXL	34,80	883,920	435	*	*	*	*
1000 MXL	10,00	254,000	125	*	*	*	*	3520 MXL	35,20	894,080	440	*	*	*	*
1008 MXL	10,08	256,032	126	*	*	*	*	3632 MXL	36,32	922,528	454	*	*	*	*
1016 MXL	10,16	258,064	127	*	*	*	*	3704 MXL	37,04	940,816	463	*	*	*	*
1040 MXL	10,40	264,160	130	*	*	*	*	3944 MXL	39,44	1001,776	493	*	*	*	*
1056 MXL	10,56	268,224	132	*	*	*	*	4000 MXL	40,00	1016,000	500	*	*	*	*
1072 MXL	10,72	272,288	134	*	*	*	*	4064 MXL	40,64	1032,256	508	*	*	*	*
1120 MXL	11,20	284,480	140	*	*	*	*	4200 MXL	42,00	1066,800	525	*	*	*	*
1176 MXL	11,76	298,704	147	*	*	*	*	4280 MXL	42,80	1087,120	535	*	*	*	*
1200 MXL	12,00	304,800	150	*	*	*	*	4456 MXL	44,56	1131,824	557	*	*	*	*
1224 MXL	12,24	310,896	153	*	*	*	*	4736 MXL	47,36	1202,944	592	*	*	*	*
1240 MXL	12,40	314,960	155	*	*	*	*	4800 MXL	48,00	1219,200	600	*	*	*	*
1280 MXL	12,80	325,120	160	*	*	*	*	5224 MXL	52,24	1326,896	653	*	*	*	*
1400 MXL	14,00	355,600	175	*	*	*	*								
1472 MXL	14,72	373,888	184	*	*	*	*								

* Ozubené řemeny MXL pouze na základě poptávky. / Timing belt MXL only on demand.